

Appendix B

Hayle Accessibility Assessment

Accessibility Assessment – Hayle

Cell Number 1					
Type of Facility / Service	Proximity of nearest facility/service to Cell			Total Score	Comments/barriers
Town and neighbourhood centres (400 – 800 - 1200m)	400m	800m	1200m		Cell in closer proximity to Foundry TC than Copperhouse although access is constrained by harbour bridge route
Primary Schools (400 - 800 - 1200m)	400m	800m	1200m		Cell equal distance from both primary schools and harbour/bridge is a barrier to easy access as is the rail line
Secondary Schools (800 - 1200 – 1600m)	800m	1200m	1600m		The harbour/current bridge from North Quay to the town is a barrier to easy access as is the rail line
Open space Strategic & Public Open Space (400 - 800m)	400m	800m			There is a cricket pitch within the cell. Cell in close proximity and with good access to the beach and dunes
Health facilities (400 - 800m)	400m	800m			Not within easy walking distance. The harbour/current bridge from North Quay to the town is a barrier to easy access
Supermarkets (400 - 800m)	400m	800m			Not within easy walking distance. There is a proposal to locate a new supermarket on South Quay adjacent.
Employment areas (800 – 1200 - 1600m)	800m	1200m	1600m		The derelict north quay is proposed for future employment use. Current bridge is a barrier to the Foundry area.
Vehicular Access	Comments				
Deliverable vehicular <u>access</u> to serve the site area	Cell would be accessible from existing roads although routes are constrained i.e. bridge				Total Score Calculation 3 boxes – median or majority colour 2 boxes – median or lower coverage colour
Possible vehicular <u>connection</u> from the site area to the town centre	Connection through Phillack or across harbour bridge due to be upgraded				
Any Other Comments/Summary	Cell reasonably accessible to town centre, less accessible to schools. Key issue may be the barrier of the Harbour area - the existing bridge may be upgraded? Access through Phillack is v. constrained				
	Whole of cell within distance			Overall Score	
	> appr ^x 2/3 within		< appr ^x 1/3 within	21	Median or majority colour of Total Score boxes
	< appr ^x 2/3 > 1/3 within		None of cell within		

Cell Number 2					
Type of Facility / Service	Proximity of nearest facility/service to Cell			Total Score	Comments/barriers
Town and neighbourhood centres (400 – 800 - 1200m)	400m	800m	1200m		Cell approx equal distance to both Foundry and Copperhouse TC's, although access is constrained by harbour bridge route
Primary Schools (400 - 800 - 1200m)	400m	800m	1200m		Cell roughly equal distance form both primary schools and harbour/bridge is a barrier to easy access as is rail line
Secondary Schools (800 - 1200 – 1600m)	800m	1200m	1600m		The harbour/current bridge form North Quay to the town is a barrier to easy access as is the rail line
Open space Strategic & Public Open Space (400 - 800m)	400m	800m			Cell in close proximity and with good access to the beach and dunes
Health facilities (400 - 800m)	400m	800m			Not within easy walking distance. The harbour/current bridge from North Quay to the town is a barrier to easy access
Supermarkets (400 - 800m)	400m	800m			South east of the cell is within distance to the existing Co-op
Employment areas (800 – 1200 - 1600m)	800m	1200m	1600m		The derelict north quay is proposed for future employment use. Current bridge is a barrier to the Foundry area.
Vehicular Access	Comments				
Deliverable vehicular <u>access</u> to serve the site area	Cell would be accessible from existing roads although routes are constrained i.e. bridge				Total Score Calculation 3 boxes – median or majority colour 2 boxes – median or lower coverage colour
Possible vehicular <u>connection</u> from the site area to the town centre	Connection through Phillack or across harbour bridge due to be upgraded				
Any Other Comments/Summary	Cell reasonably accessible to town centre, less accessible to schools. Key issue may be the barrier of the Harbour area - the existing bridge may be upgraded? Access through Phillack is v. constrained				
	Whole of cell within distance			Overall Score	
	> appr ^x 2/3 within	< appr ^x 1/3 within		23	Median or majority colour of Total Score boxes
	< appr ^x 2/3 > 1/3 within	None of cell within			

Cell Number 3					
Type of Facility / Service	Proximity of nearest facility/service to Cell			Total Score	Comments/barriers
Town and neighbourhood centres (400 – 800 - 1200m)	400m	800m	1200m		Cell is within walking distance to the Copperhouse Town Centre via Lethlean Lane
Primary Schools (400 - 800 - 1200m)	400m	800m	1200m		Cell is closer to Bodriggy infant school although not within easy walking distance due to railway line which is a barrier
Secondary Schools (800 - 1200 – 1600m)	800m	1200m	1600m		West of the cell is within 1600m although potential route is not within easy walking distance due to railway line which is a barrier
Open space Strategic & Public Open Space (400 - 800m)	400m	800m			Cell is an area of dunes with access to the beach
Health facilities (400 - 800m)	400m	800m			Not within easy walking distance. The estuary and the rail line are barriers
Supermarkets (400 - 800m)	400m	800m			Cell (parts of) are within 800m walking distance to the co-op and lidl's. The A30 is a barrier to M&S
Employment areas (800 – 1200 - 1600m)	800m	1200m	1600m		Cell is closer in proximity to the existing employment areas at the east of the town, although the A30 is a barrier.
Vehicular Access	Comments				
Deliverable vehicular <u>access</u> to serve the site area	Cell would be accessible from existing roads although routes are constrained i.e. Phillack				Total Score Calculation 3 boxes – median or majority colour 2 boxes – median or lower coverage colour
Possible vehicular <u>connection</u> from the site area to the town centre	Connection through Phillack possible although need upgrading				
Any Other Comments/Summary	Cell reasonably accessible to town centre, less accessible to schools. Key issue being access through Phillack which is v. constrained. The Harbour area is also a barrier- the existing bridge may be upgraded?				
	Whole of cell within distance > appr ^x 2/3 within < appr ^x 2/3 > 1/3 within			Overall Score 20 Median or majority colour of Total Score boxes	
			< appr ^x 1/3 within None of cell within		

Cell Number 4					
Type of Facility / Service	Proximity of nearest facility/service to Cell			Total Score	Comments/barriers
Town and neighbourhood centres (400 – 800 - 1200m)	400m	800m	1200m	17	Cell not within easy walking access to the Copperhouse TC
Primary Schools (400 - 800 - 1200m)	400m	800m	1200m		Cell is on the northern periphery of the town an is not within easy walking distance to the primary schools
Secondary Schools (800 - 1200 – 1600m)	800m	1200m	1600m		Cell is on the northern periphery of the town an is not within easy walking distance to the Secondary school
Open space Strategic & Public Open Space (400 - 800m)	400m		800m	17	Cell is in close proximity/adjacent to informal open space of the towans
Health facilities (400 - 800m)	400m		800m	17	Cell is on the northern periphery of the town an is not within easy walking distance to existing health facilities
Supermarkets (400 - 800m)	400m		800m	17	Southern tip is within 800m of the lidl and M&S although the A30 is a barrier to the M&S
Employment areas (800 – 1200 - 1600m)	800m	1200m	1600m	17	Cell is within walking distance to employment areas at the east of the town. The A30 is a barrier
Vehicular Access	Comments				
Deliverable vehicular <u>access</u> to serve the site area	Cell could be accessed from Loggans Road			17	Total Score Calculation 3 boxes – median or majority colour 2 boxes – median or lower coverage colour
Possible vehicular <u>connection</u> from the site area to the town centre	Town centre could be accessed from along Loggans Road – may need upgrade/junctions			17	
Any Other Comments/Summary	Cell scores poorly on accessibility, in particular due to its peripheral location and distance from the town centres and schools				
	Whole of cell within distance > apprx 2/3 within < apprx 2/3 > 1/3 within			17	Overall Score Median or majority colour of Total Score boxes
	< apprx 1/3 within None of cell within				

Cell Number 5					
Type of Facility / Service	Proximity of nearest facility/service to Cell			Total Score	Comments/barriers
Town and neighbourhood centres (400 – 800 - 1200m)	400m	800m	1200m	22	Southern half of cell within 1200m of the Copperhouse TC. Route along Loggan's rd as A30 is a barrier on eastern boundary of cell
Primary Schools (400 - 800 - 1200m)	400m	800m	1200m		
Secondary Schools (800 - 1200 – 1600m)	800m	1200m	1600m		
Open space Strategic & Public Open Space (400 - 800m)	400m	800m		22	Northern half of the cell is listed as an informal area of open space
Health facilities (400 - 800m)	400m	800m		22	Cell not within easy walking distance at the north east edge of the town. Adjacent A30 is a barrier
Supermarkets (400 - 800m)	400m	800m		22	Lidl is at the southern tip of the cell. The A30 is a barrier to the M&S store
Employment areas (800 – 1200 - 1600m)	800m	1200m	1600m	22	Cell is within 800m walking distance of sites at east of the town although the A30 is a barrier to easy/safe pedestrian movement
Vehicular Access	Comments				
Deliverable vehicular <u>access</u> to serve the site area	Cell could be accessed from Loggans Road, Carwin Rise/A30 may not warrant access			22	Total Score Calculation 3 boxes – median or majority colour 2 boxes – median or lower coverage colour
Possible vehicular <u>connection</u> from the site area to the town centre	Town centre could be accessed from along Loggans Road – may need upgrade/junctions			22	
Any Other Comments/Summary	Cell scores relatively poorly on accessibility in particular to the town centre and schools. The cell is contained by the A30 and Carwin Rise roundabout access onto which would be unlikely and therefore a constraint				
	Whole of cell within distance			Overall Score	
	> appr ^x 2/3 within		< appr ^x 1/3 within	22	Median or majority colour of Total Score boxes
	< appr ^x 2/3 > 1/3 within		None of cell within		

Cell Number 6					
Type of Facility / Service	Proximity of nearest facility/service to Cell			Total Score	Comments/barriers
Town and neighbourhood centres (400 – 800 - 1200m)	400m	800m	1200m		The A30 is a barrier to safe/easy access to the Copperhouse Town centre
Primary Schools (400 - 800 - 1200m)	400m	800m	1200m		Cell is closer to Connor Downs Primary School although access along Carwen Rise is not safe/easy for pedestrians
Secondary Schools (800 - 1200 – 1600m)	800m	1200m	1600m		Cell is isolated from the secondary school. The A30 is a barrier to easy/safe access.
Open space Strategic & Public Open Space (400 - 800m)	400m	800m			An area of informal open space is adjacent over the A30, however the A30 is a clear barrier to enable access to this
Health facilities (400 - 800m)	400m	800m			Cell is isolated from existing health facilities. The A30 is a barrier to easy/safe access.
Supermarkets (400 - 800m)	400m	800m			Cell is within 800m walking distance to the M&S and Lidl although the A30 is a barrier to easy/safe pedestrian movement
Employment areas (800 – 1200 - 1600m)	800m	1200m	1600m		Cell is within 800m walking distance of sites at east of the town although the A30 is a barrier to easy/safe pedestrian movement
Vehicular Access	Comments				
Deliverable vehicular <u>access</u> to serve the site area	Cell access could be made from Carwin Rise				Total Score Calculation 3 boxes – median or majority colour 2 boxes – median or lower coverage colour
Possible vehicular <u>connection</u> from the site area to the town centre	Town centre could be accessed from Carwin Rise				
Any Other Comments/Summary	Cell scores relatively poorly on accessibility in particular to the town centre and schools. Road access could in theory be made off Carwin Rise although pedestrian access to the town is constrained by the A30 and Marsh Lane roundabout which act as barriers to pedestrian movement				
	Whole of cell within distance				Overall Score
	> appr ^x 2/3 within		< appr ^x 1/3 within	21	Median or majority colour of Total Score boxes
	< appr ^x 2/3 > 1/3 within		None of cell within		

Cell Number 7					
Type of Facility / Service	Proximity of nearest facility/service to Cell			Total Score	Comments/barriers
Town and neighbourhood centres (400 – 800 - 1200m)	400m	800m	1200m	21	Cell is not within easy access to the Copperhouse town centre due to distance and the A30 creating a barrier
Primary Schools (400 - 800 - 1200m)	400m	800m	1200m		Cell is closer to Connor Downs Primary School, access along Carwen Rise is not safe/easy for pedestrians. A30 is a barrier
Secondary Schools (800 - 1200 – 1600m)	800m	1200m	1600m		Cell is isolated from the secondary school. The A30 is a barrier to easy/safe access. A route along Nanpusker Rd & Viaduct Hill
Open space Strategic & Public Open Space (400 - 800m)	400m		800m	21	Close to formal facilities i.e. cell is adjacent to Hayle Rugby ground & close to the golf range
Health facilities (400 - 800m)	400m		800m		Cell is isolated from health facilities. A30 is a barrier. Access along Nanpusker Rd, Viaduct Hill & High Lanes
Supermarkets (400 - 800m)	400m		800m	21	Cell is adjacent to the M&S and close to the Lidl. The A30 is a barrier to the Lidl/town
Employment areas (800 – 1200 - 1600m)	800m	1200m	1600m		Cell is adjacent to the Marsh Lane employment area and close to areas at the east of town. A30 is a barrier to the town
Vehicular Access	Comments				
Deliverable vehicular <u>access</u> to serve the site area	Cell accessible from Marsh Lane, capacity issues on A30/Carwin Rise roundabout			21	Total Score Calculation 3 boxes – median or majority colour 2 boxes – median or lower coverage colour
Possible vehicular <u>connection</u> from the site area to the town centre	Town centre connection from Marsh Lane, capacity issues on A30/Carwin Rise roundabout				
Any Other Comments/Summary	Cell scores relatively poor in relation to access to town centre and schools but better in relation to employment area and supermarkets. The A30 and Marsh Lane roundabout however act as barriers to pedestrian movement and accessibility into the town.				
	Whole of cell within distance			21	Overall Score Median or majority colour of Total Score boxes
	> appr ^x 2/3 within		< appr ^x 1/3 within		
	< appr ^x 2/3 > 1/3 within		None of cell within		

Cell Number 8					
Type of Facility / Service	Proximity of nearest facility/service to Cell			Total Score	Comments/barriers
Town and neighbourhood centres (400 – 800 - 1200m)	400m	800m	1200m	2	Cell is 1200m although is isolated from the town by the A30 and rail line. Access is along Wheal Alfred Rd or Nanpusker Rd
Primary Schools (400 - 800 - 1200m)	400m	800m	1200m	3	Cell is closer to Bodriggy infant school although A30 and rail line act as a barrier
Secondary Schools (800 - 1200 – 1600m)	800m	1200m	1600m	2	Cell is within 1600m of the school although A30 and rail line act as barriers
Open space Strategic & Public Open Space (400 - 800m)	400m	800m		2	Large area of the cell is the golf range. Close to Hayle football club
Health facilities (400 - 800m)	400m	800m		3	Cell is isolated from existing health facilities, the A30 and rail line act as barriers
Supermarkets (400 - 800m)	400m	800m		2	Some of cell within 800m of M&S and Lidl. A30 and rail line act as barrier to easy access
Employment areas (800 – 1200 - 1600m)	800m	1200m	1600m	3	Cell close to employment areas at east of the town although A30 and rail line act as barriers to easy access
Vehicular Access	Comments				
Deliverable vehicular <u>access</u> to serve the site area	Could be accessed from Wheal Alfred Rd, Nanpusker Rd also but more constrained			2	Total Score Calculation 3 boxes – median or majority colour 2 boxes – median or lower coverage colour
Possible vehicular <u>connection</u> from the site area to the town centre	Potential connections along Wheal Alfred Rd, Nanpusker Rd, upgrades would be needed				
Any Other Comments/Summary	A key issue regarding this cell is the barriers created by the A30 and rail line which constrain opportunities for movement into the town and reduces accessibility to the town centre and schools				
	Whole of cell within distance			Overall Score	
	> aprx 2/3 within		< aprx 1/3 within	21	Median or majority colour of Total Score boxes
	< aprx 2/3 > 1/3 within		None of cell within		

Cell Number 9					
Type of Facility / Service	Proximity of nearest facility/service to Cell			Total Score	Comments/barriers
Town and neighbourhood centres (400 – 800 - 1200m)	400m	800m	1200m	29	Cell is in close proximity to the Copperhouse TC, the rail line is a barrier, access is along Chapel Lane.
Primary Schools (400 - 800 - 1200m)	400m	800m	1200m		
Secondary Schools (800 - 1200 – 1600m)	800m	1200m	1600m	29	Cell in close proximity to the secondary school with access along High lanes
Open space Strategic & Public Open Space (400 - 800m)	400m	800m			
Health facilities (400 - 800m)	400m	800m		29	Over half the cell is within 800m of the health centre on Queens Way
Supermarkets (400 - 800m)	400m	800m			
Employment areas (800 – 1200 - 1600m)	800m	1200m	1600m	29	Cell within close proximity to employment areas at the east of the town although rail line is a barrier. Good access Viaduct Hill
Vehicular Access	Comments				
Deliverable vehicular <u>access</u> to serve the site area	Access from High Lanes/Viaduct Hill/ Strawberry Ln, rail line is a barrier however			29	Total Score Calculation 3 boxes – median or majority colour 2 boxes – median or lower coverage colour
Possible vehicular <u>connection</u> from the site area to the town centre	Connection from High Lanes/Viaduct Hill/ Strawberry Ln, rail line is a barrier however				
Any Other Comments/Summary	This cell scores will in terms of pedestrian accessibility in particular in relation to the town centres and schools. Issues are the barrier created by the rail line and capacity for vehicular traffic into the town				
	Whole of cell within distance			Overall Score	
	> appr ^x 2/3 within		< appr ^x 1/3 within	29	Median or majority colour of Total Score boxes
	< appr ^x 2/3 > 1/3 within		None of cell within		

Cell Number 10					
Type of Facility / Service	Proximity of nearest facility/service to Cell			Total Score	Comments/barriers
Town and neighbourhood centres (400 – 800 - 1200m)	400m	800m	1200m		Good proximity and access to the Foundry TC along Penpol Rd (particulary at east). Also access to Copperhouse at the west
Primary Schools (400 - 800 - 1200m)	400m	800m	1200m		Penpol school is adjacent to the cell and there is also good access to Bodriggy infant school
Secondary Schools (800 - 1200 – 1600m)	800m	1200m	1600m		Hayel secondary school is adjacent to the cell at the north
Open space Strategic & Public Open Space (400 - 800m)	400m	800m			Good access to Millpond avenue and playing fields at Penpol avenue
Health facilities (400 - 800m)	400m	800m			Good access to the health centres at Foundry Hill and Queens Way
Supermarkets (400 - 800m)	400m	800m			Cell is not within easy walking distance to the supermarkets at the east of Hayle.(There is a proposal for a further supermarket)
Employment areas (800 – 1200 - 1600m)	800m	1200m	1600m		Cell in good proximity to Foundry employment area
Vehicular Access	Comments				
Deliverable vehicular <u>access</u> to serve the site area	Access along St Georges Rd/High lanes. Penpol to Foundry area capacity issues				Total Score Calculation 3 boxes – median or majority colour 2 boxes – median or lower coverage colour
Possible vehicular <u>connection</u> from the site area to the town centre	Connection from Penpol Rd to the Foundry, capacity issues may be an issue				
Any Other Comments/Summary	Cell scores will in relation to access for pedestrians to schools and the town centre in particular the Foundry area. Issues are capacity for vehicular movements into the town / cell along Penpol Rd				
	Whole of cell within distance			Overall Score	
	> appr ^x 2/3 within		< appr ^x 1/3 within	28	Median or majority colour of Total Score boxes
	< appr ^x 2/3 > 1/3 within		None of cell within		

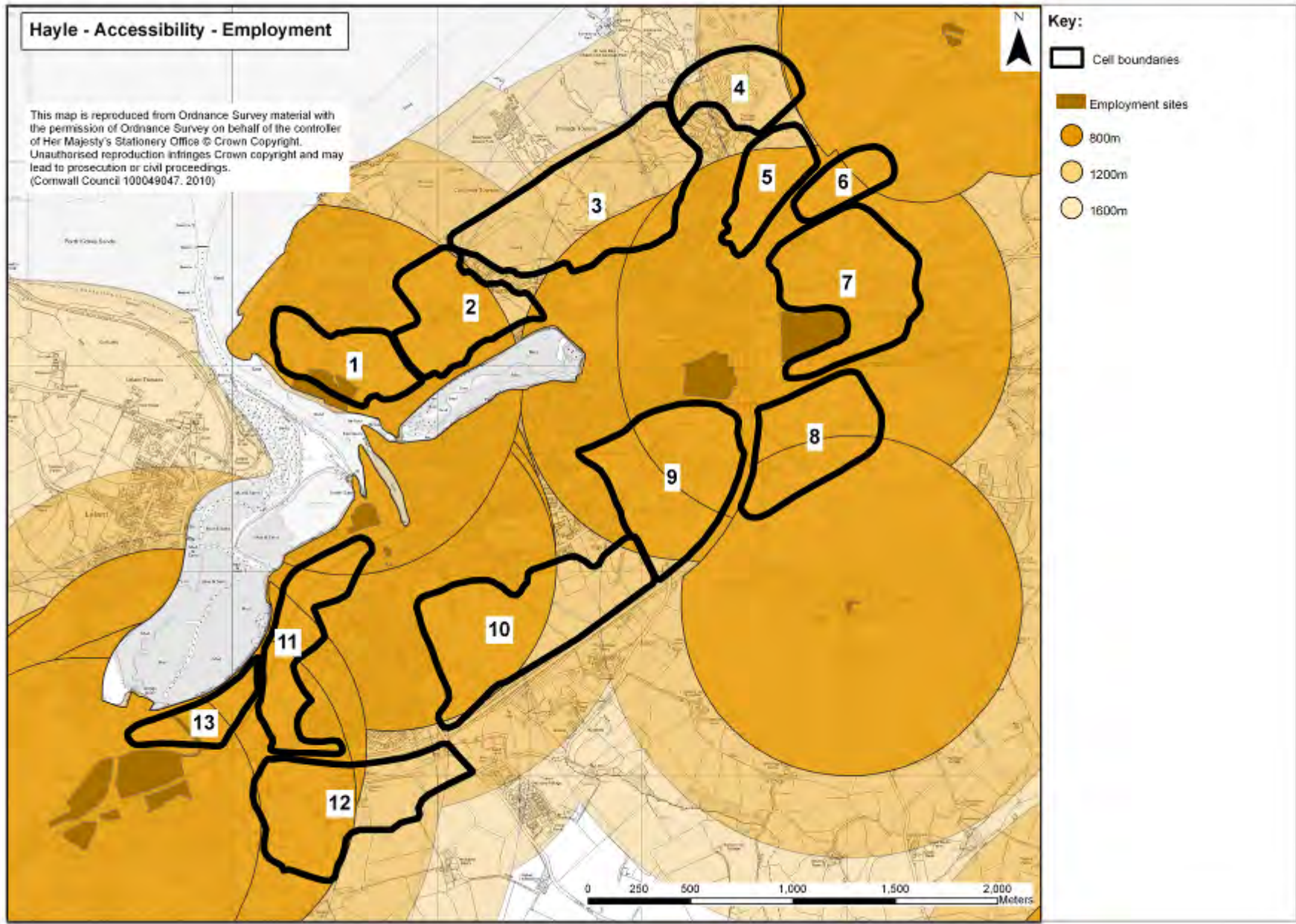
Cell Number 11					
Type of Facility / Service	Proximity of nearest facility/service to Cell			Total Score	Comments/barriers
Town and neighbourhood centres (400 – 800 - 1200m)	400m	800m	1200m	27	Good access to the Foundry TC particularly at the north of cell which is adjacent
Primary Schools (400 - 800 - 1200m)	400m	800m	1200m	27	North of cell has good access to Penpol School. Rail line through cell is a barrier for west of cell
Secondary Schools (800 - 1200 – 1600m)	800m	1200m	1600m	27	Good access to Hayle school from north of cell although rail line through cell is a barrier
Open space Strategic & Public Open Space (400 - 800m)	400m	800m		27	Allotments exist adjacent to the cell
Health facilities (400 - 800m)	400m	800m		27	In close proximity to health centre on Foundry Hill. Rail line through cell is a barrier
Supermarkets (400 - 800m)	400m	800m		27	Not within walking distance to supermarkets at east of town. There is a proposal for a further supermarket in Hayle.
Employment areas (800 – 1200 - 1600m)	800m	1200m	1600m	27	Good proximity to employment areas at Foundry and St Erth although rail line and A30 are barriers to pedestrian movement
Vehicular Access	Comments				
Deliverable vehicular <u>access</u> to serve the site area	Access could be made from Carnsew Road			27	Total Score Calculation 3 boxes – median or majority colour 2 boxes – median or lower coverage colour
Possible vehicular <u>connection</u> from the site area to the town centre	Connection to Foundry TC would be along Carnsew Road (if access made / new junction)				
Any Other Comments/Summary	Cell in particular the northern half scores well in relation to pedestrian accessibility to the Foundry town centre and schools. The rail line splits the cell in two which is an issue for movement within the cell				
	Whole of cell within distance			Overall Score	
	> appr ^x 2/3 within		< appr ^x 1/3 within	27	Median or majority colour of Total Score boxes
	< appr ^x 2/3 > 1/3 within		None of cell within		

Cell Number 12					
Type of Facility / Service	Proximity of nearest facility/service to Cell			Total Score	Comments/barriers
Town and neighbourhood centres (400 – 800 - 1200m)	400m	800m	1200m		Cell not within easy walking distance to the Foundry TC and the A30 is a barrier to connectivity to the town
Primary Schools (400 - 800 - 1200m)	400m	800m	1200m		Relatively good proximity to St Erth primary School along Trenhayle Lane, although lane is constrained
Secondary Schools (800 - 1200 – 1600m)	800m	1200m	1600m		East of cell within 1600m although A30 is a barrier to connectivity to the town
Open space Strategic & Public Open Space (400 - 800m)	400m		800m		Penwith pitch and putt is within the western part of the cell
Health facilities (400 - 800m)	400m		800m		Not within easy walking distance to health facility at Foundry Hill, A30 is a Barrier
Supermarkets (400 - 800m)	400m		800m		Not within walking distance to supermarkets at east of Hayle (there is a proposal for a further supermarket in Hayle)
Employment areas (800 – 1200 - 1600m)	800m	1200m	1600m		Relatively good proximity to St Erth employment area although A30 is a barrier – (access through St Erth)
Vehicular Access	Comments				Total Score Calculation 3 boxes – median or majority colour 2 boxes – median or lower coverage colour
Deliverable vehicular <u>access</u> to serve the site area	Access could be made off Mellanear Rd, Trenhayle Ln would need upgrade, A30 barrier				
Possible vehicular <u>connection</u> from the site area to the town centre	Poss connection along Mellaner Rd / Foundry Hill although obvious capacity issues on route				
Any Other Comments/Summary	Cell is cut off from the town by the A30 and due to its location scores relatively poorly in relation to the town centre and secondary schools. Closest school is St Erth. Key issue is the poor connectivity to the town due to being south of the A30 and only one route Mellanera Rd across.				
	Whole of cell within distance			Overall Score	
	> appr ^x 2/3 within		< appr ^x 1/3 within	19	Median or majority colour of Total Score boxes
	< appr ^x 2/3 > 1/3 within		None of cell within		

Cell Number 13					
Type of Facility / Service	Proximity of nearest facility/service to Cell			Total Score	Comments/barriers
Town and neighbourhood centres (400 – 800 - 1200m)	400m	800m	1200m	19	Small area of cell within 1200 m of Foundry TC although generally not within easy walking distance
Primary Schools (400 - 800 - 1200m)	400m	800m	1200m	19	Within 1200m of Penpol and St Erth Schools although access is constrained by rail line and A30
Secondary Schools (800 - 1200 – 1600m)	800m	1200m	1600m	19	Not within distance of the secondary school. A30 and rail line are barriers to connectivity
Open space Strategic & Public Open Space (400 - 800m)	400m	800m		19	Golf range and allotments within 800m although A30 and rail line are barriers to connectivity
Health facilities (400 - 800m)	400m	800m		19	Not within easy walking distance to health facility at Foundry Hill, A30 and rail line are Barriers
Supermarkets (400 - 800m)	400m	800m		19	Not within walking distance to supermarkets at east of Hayle (there is a proposal for a further supermarket in Hayle)
Employment areas (800 – 1200 - 1600m)	800m	1200m	1600m	19	Good proximity to St Erth employment area although A30 is a barrier to pedestrian access
Vehicular Access	Comments				
Deliverable vehicular <u>access</u> to serve the site area	Access could poss be made off the Causeway / Carnsew			19	Total Score Calculation 3 boxes – median or majority colour 2 boxes – median or lower coverage colour
Possible vehicular <u>connection</u> from the site area to the town centre	Along the Causeway / Carnsew Rd				
Any Other Comments/Summary	Cell scores poorly in relation to its peripheral location in particular to the town centre and schools. Cell is cut off from the town.				
	Whole of cell within distance			19	Overall Score Median or majority colour of Total Score boxes
	> appr ^x 2/3 within		< appr ^x 1/3 within		
	< appr ^x 2/3 > 1/3 within		None of cell within		

Hayle - Accessibility - Employment

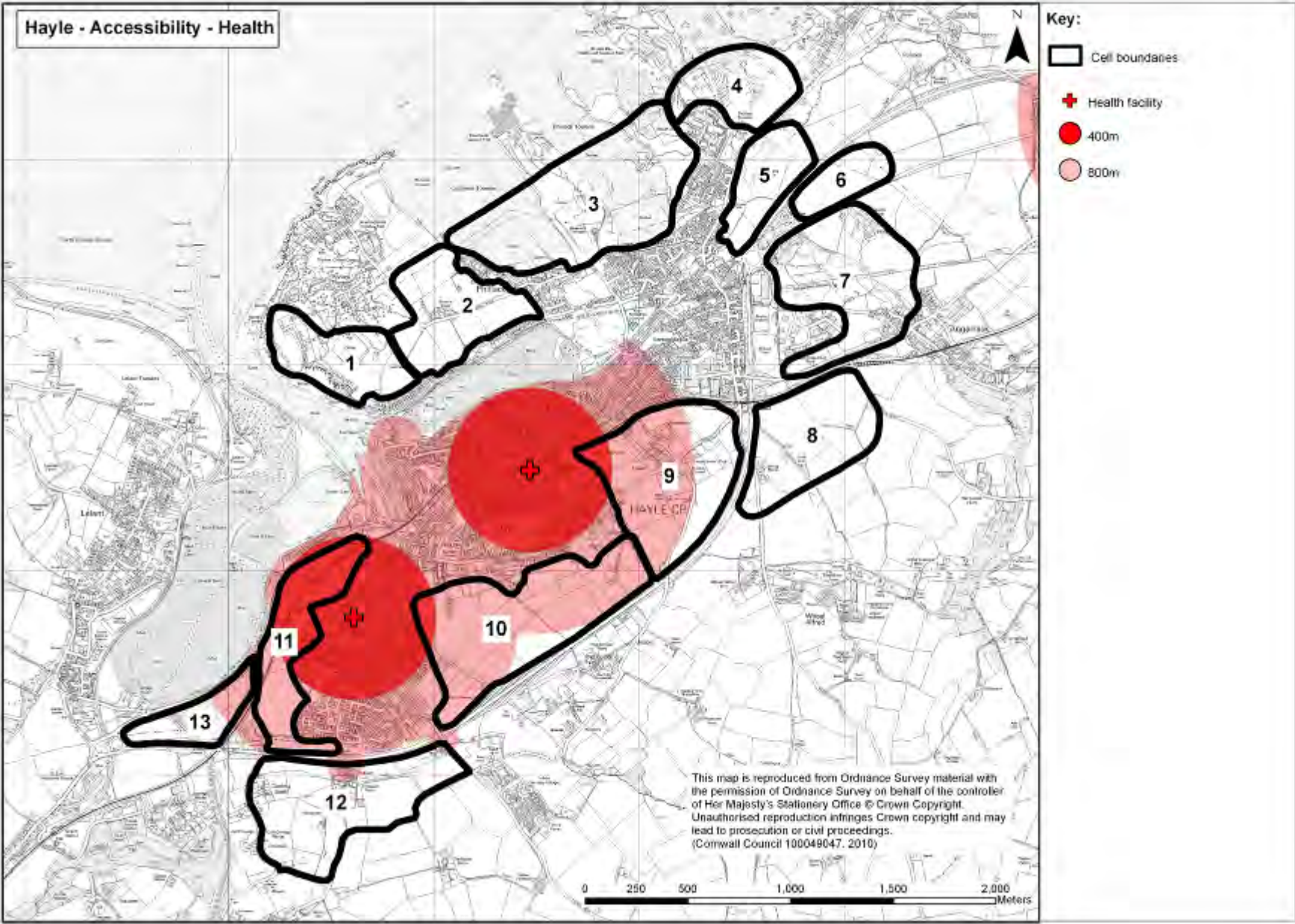
This map is reproduced from Ordnance Survey material with the permission of Ordnance Survey on behalf of the controller of Her Majesty's Stationery Office © Crown Copyright. Unauthorised reproduction infringes Crown copyright and may lead to prosecution or civil proceedings. (Cornwall Council 100049047, 2010)



Key:

- Cell boundaries
- Employment sites
- 800m
- 1200m
- 1800m

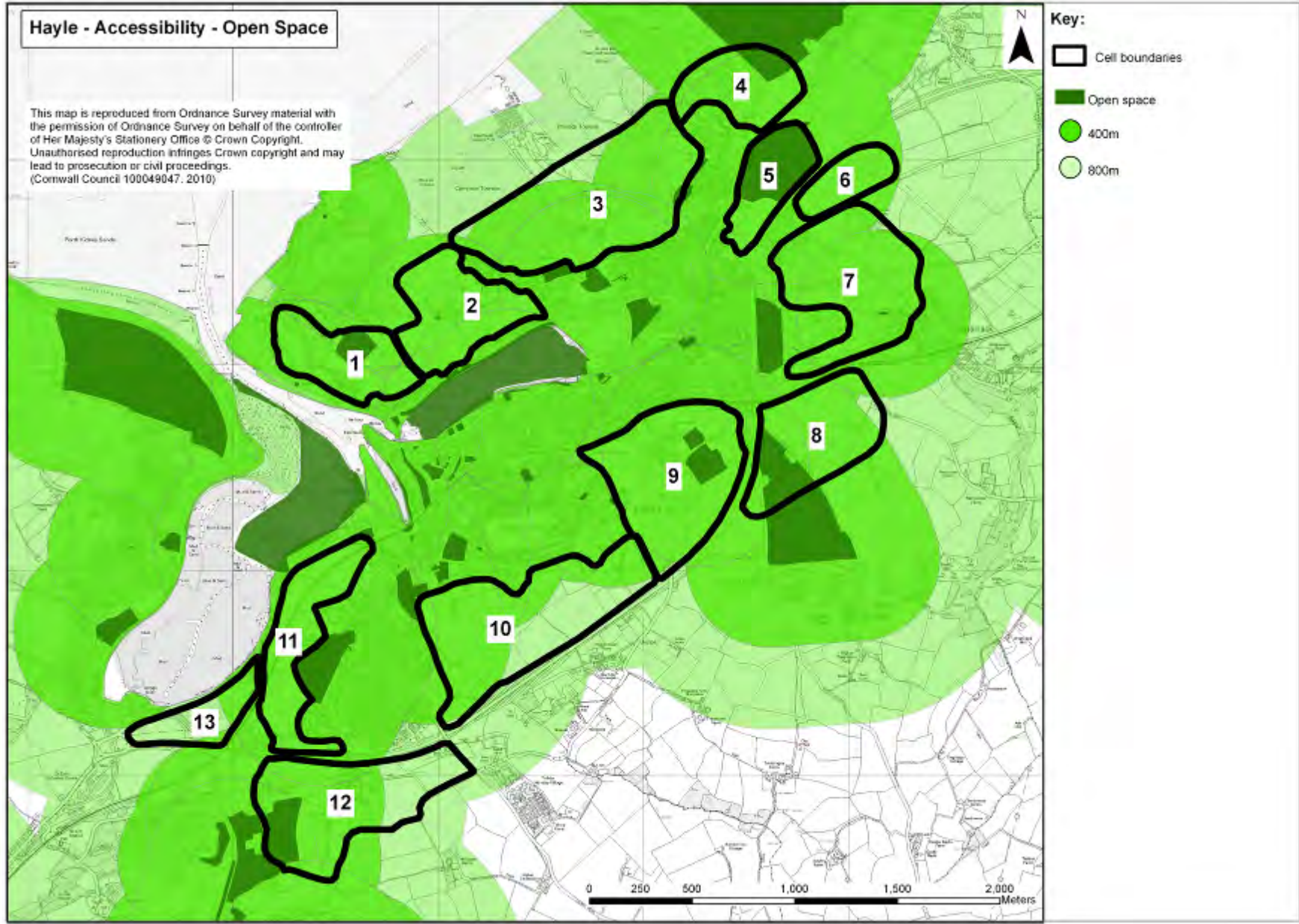
Hayle - Accessibility - Health



This map is reproduced from Ordnance Survey material with the permission of Ordnance Survey on behalf of the controller of Her Majesty's Stationery Office © Crown Copyright. Unauthorised reproduction infringes Crown copyright and may lead to prosecution or civil proceedings. (Cornwall Council 100049047, 2010)

Hayle - Accessibility - Open Space

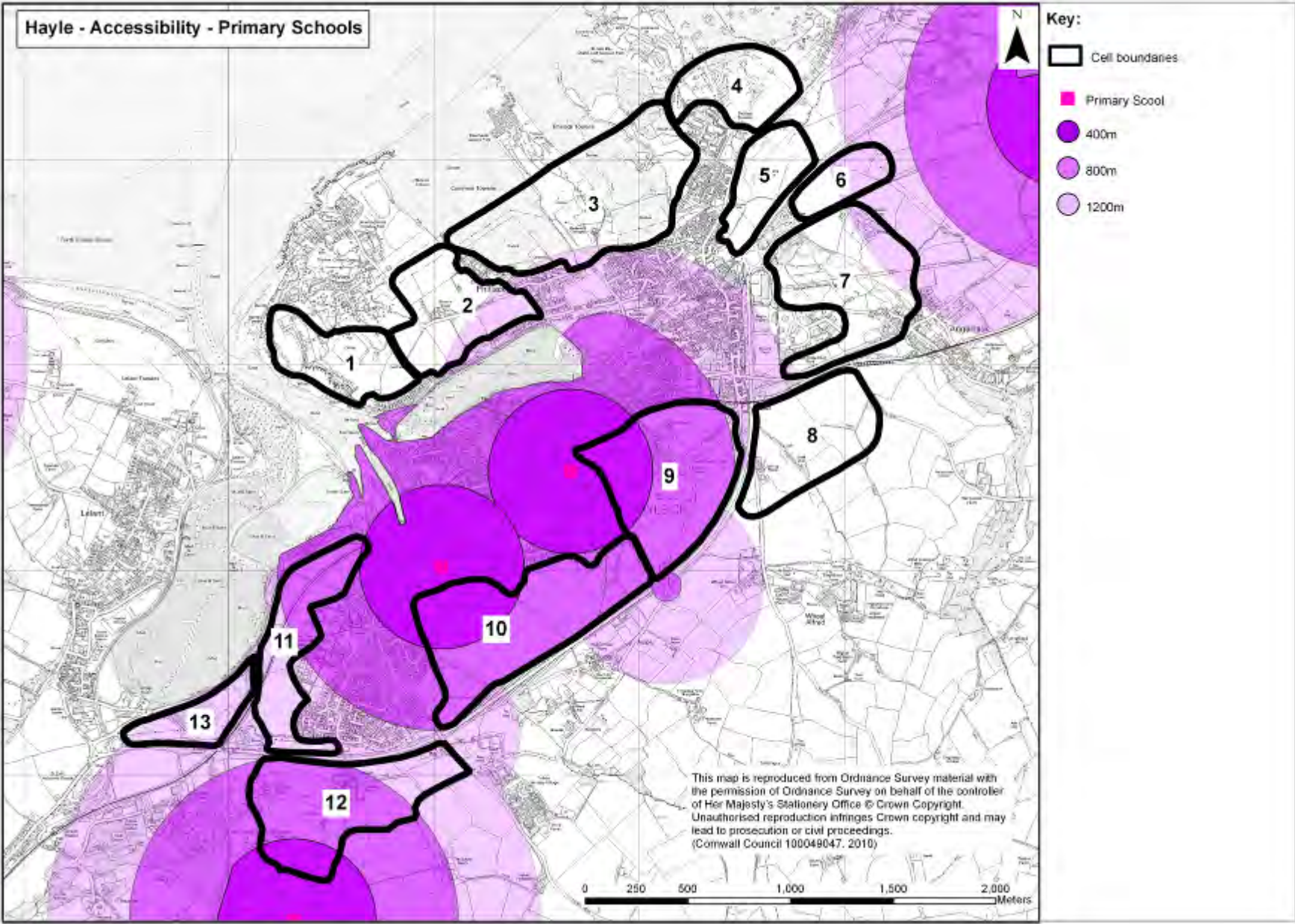
This map is reproduced from Ordnance Survey material with the permission of Ordnance Survey on behalf of the controller of Her Majesty's Stationery Office © Crown Copyright. Unauthorised reproduction infringes Crown copyright and may lead to prosecution or civil proceedings. (Cornwall Council 100049047, 2010)



Key:

- Cell boundaries
- Open space
- 400m
- 800m

Hayle - Accessibility - Primary Schools



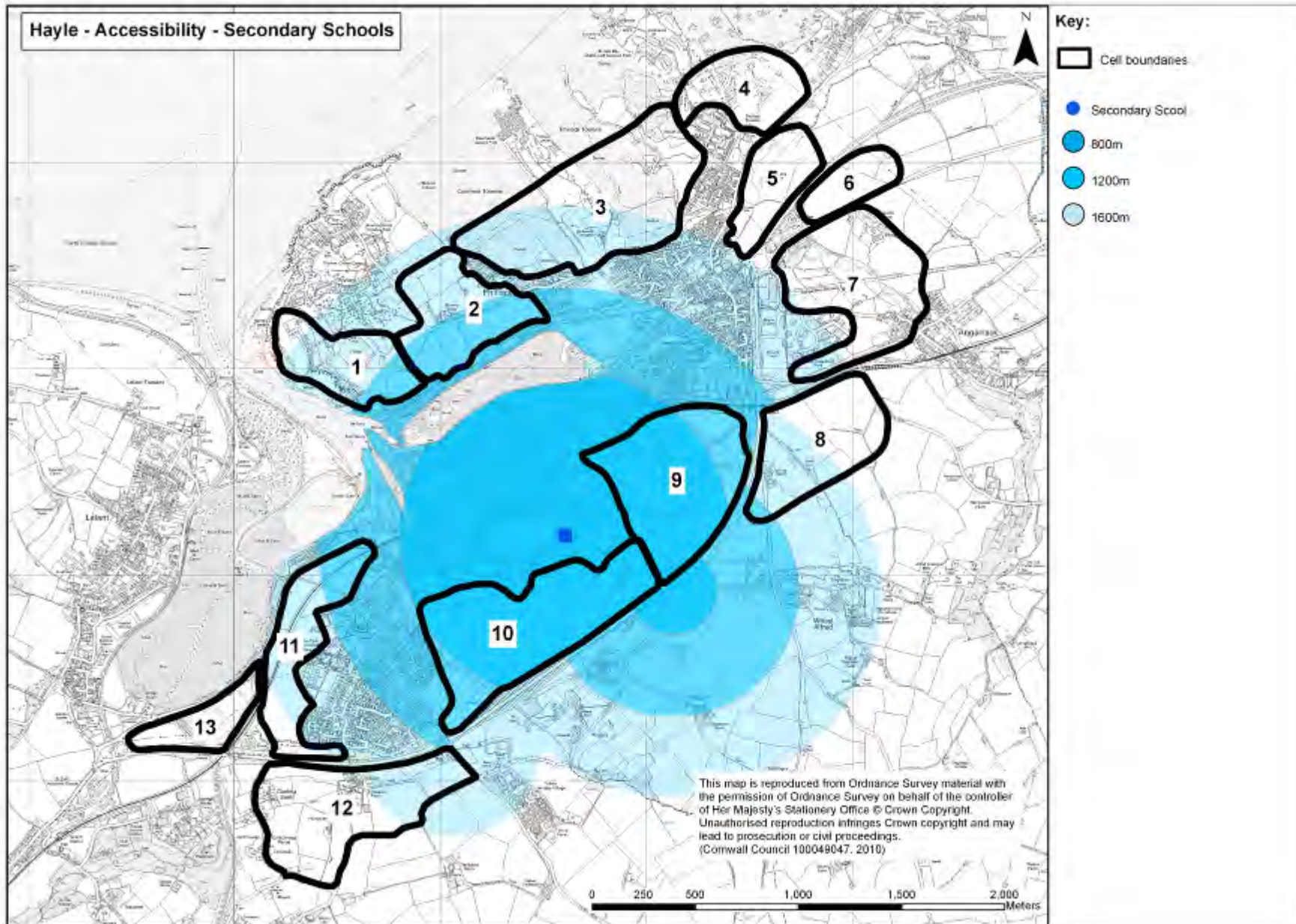
Key:

- Cell boundaries
- Primary School
- 400m
- 800m
- 1200m

This map is reproduced from Ordnance Survey material with the permission of Ordnance Survey on behalf of the controller of Her Majesty's Stationery Office © Crown Copyright. Unauthorised reproduction infringes Crown copyright and may lead to prosecution or civil proceedings. (Cornwall Council 100049047, 2010)

0 250 500 1,000 1,500 2,000 Meters

Hayle - Accessibility - Secondary Schools



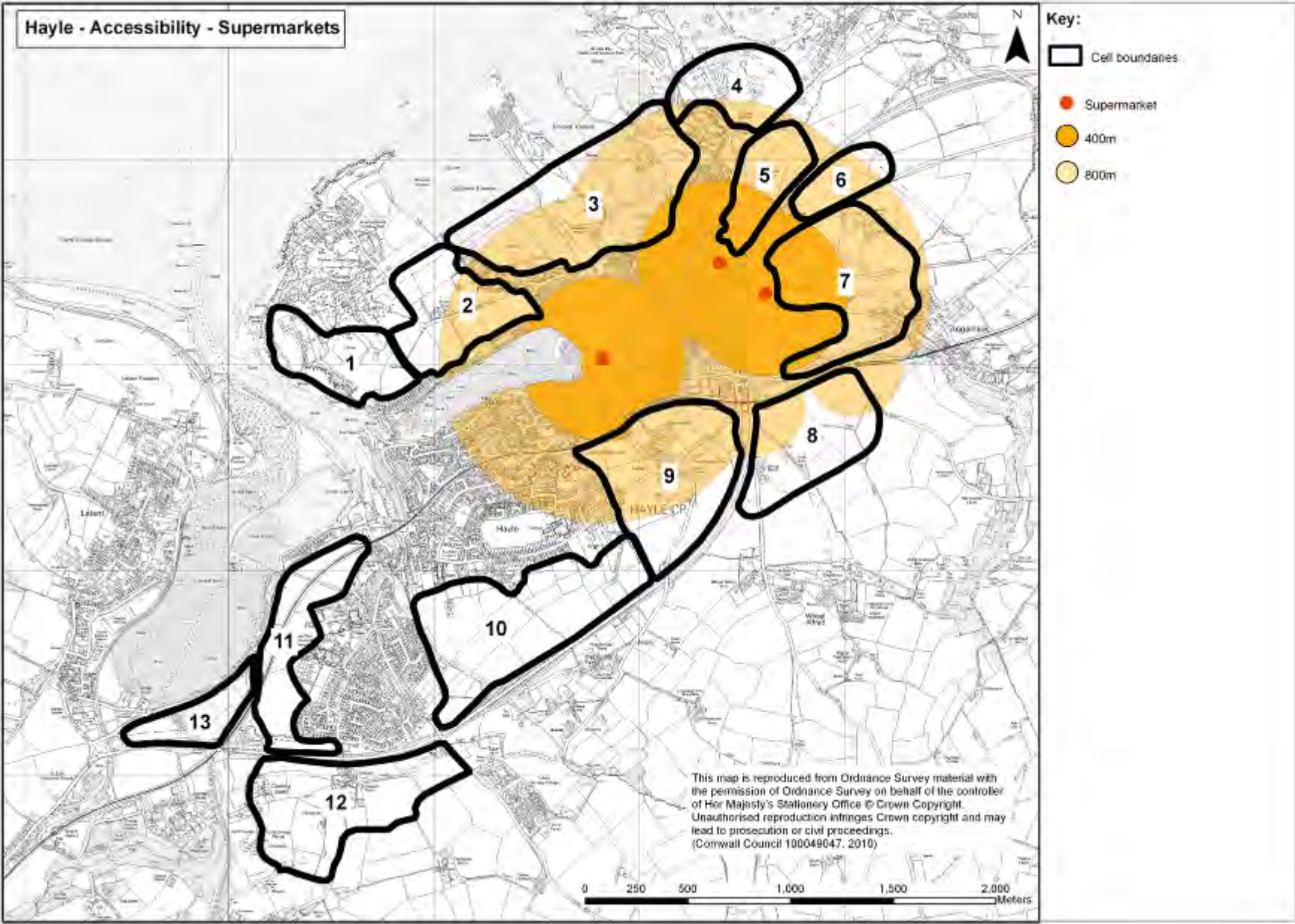
Key:

- Cell boundaries
- Secondary School
- 800m
- 1200m
- 1600m

This map is reproduced from Ordnance Survey material with the permission of Ordnance Survey on behalf of the controller of Her Majesty's Stationery Office © Crown Copyright. Unauthorised reproduction infringes Crown copyright and may lead to prosecution or civil proceedings. (Cornwall Council 100049047, 2010)

0 250 500 1,000 1,500 2,000 Meters

Hayle - Accessibility - Supermarkets



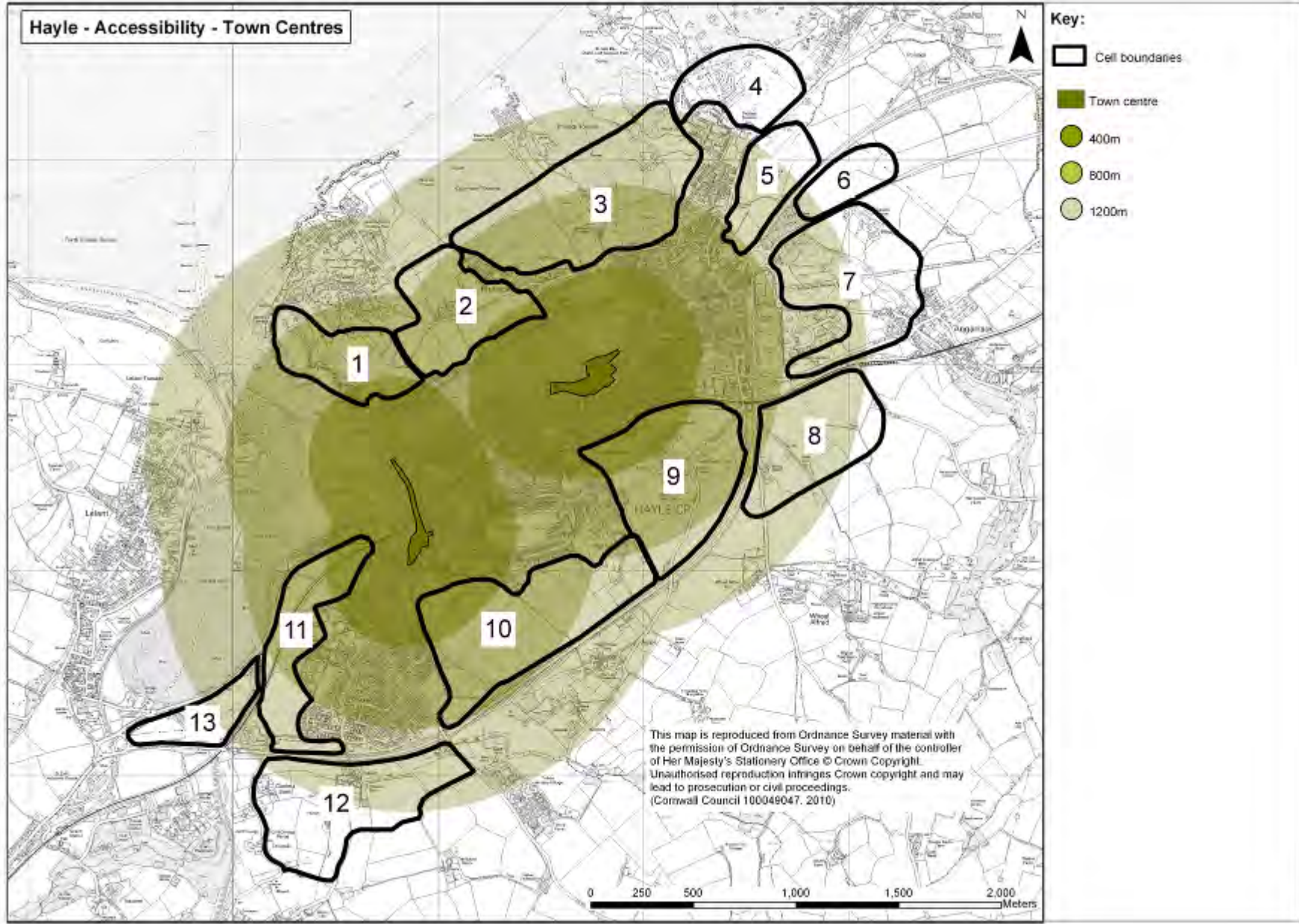
Key:

- Cell boundaries
- Supermarket
- 400m
- 800m

This map is reproduced from Ordnance Survey material with the permission of Ordnance Survey on behalf of the controller of Her Majesty's Stationery Office © Crown Copyright. Unauthorised reproduction infringes Crown copyright and may lead to prosecution or civil proceedings. (Cornwall Council 100049047, 2010)

0 250 500 1,000 1,500 2,000 Meters

Hayle - Accessibility - Town Centres



Key:

- Cell boundaries
- Town centre
- 400m
- 800m
- 1200m

This map is reproduced from Ordnance Survey material with the permission of Ordnance Survey on behalf of the controller of Her Majesty's Stationery Office © Crown Copyright. Unauthorised reproduction infringes Crown copyright and may lead to prosecution or civil proceedings. (Cornwall Council 100049047, 2010)

0 250 500 1,000 1,500 2,000 Meters