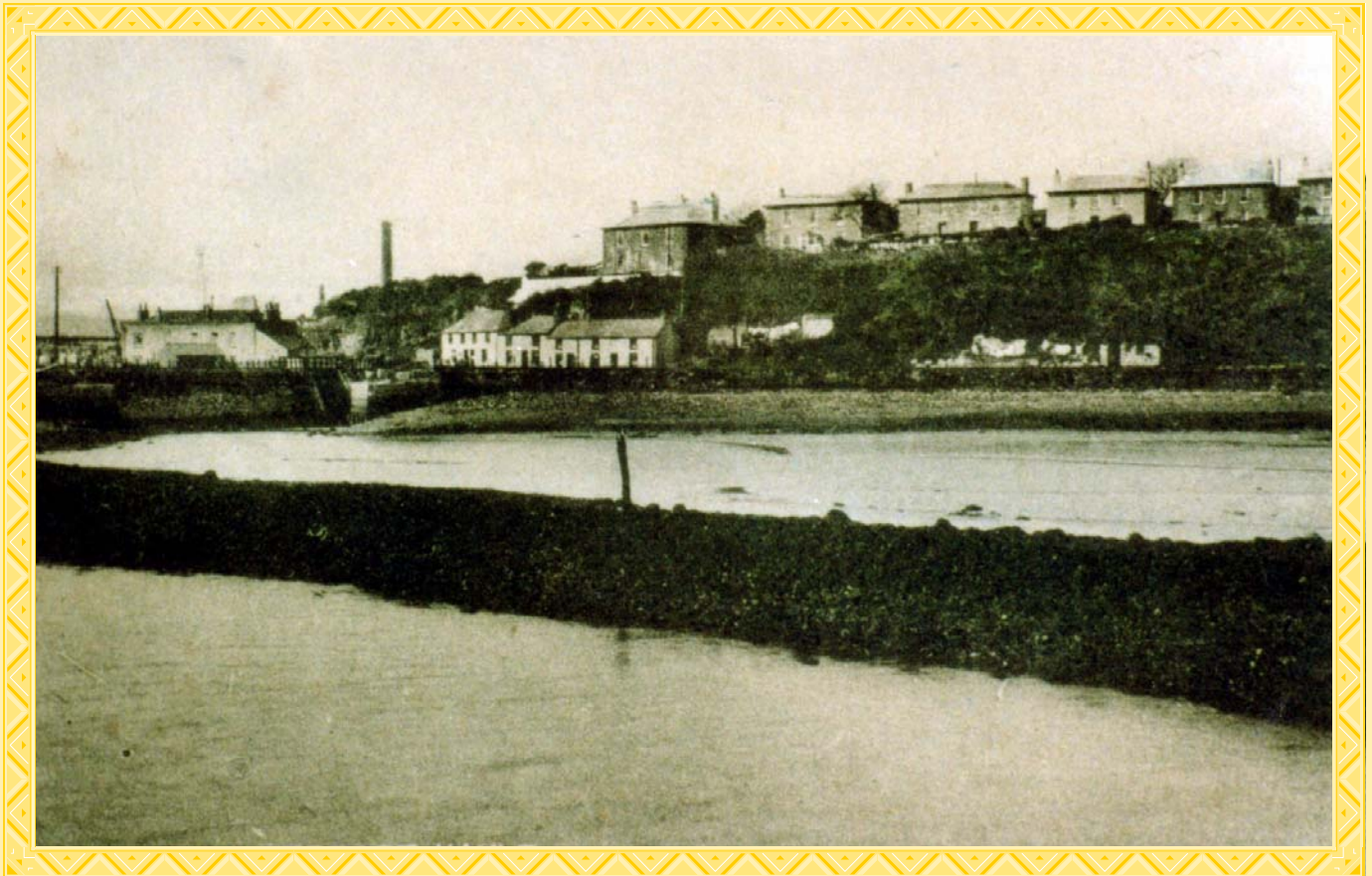


# Clifton Terrace



Early 1900s

On 18th March 1849 an Act of Settlement by Messrs. Sandys, Carne and Vivian, the Trustees of the Cornish Copper Company, completed the building of Clifton Terrace along the ridge of Riviere Cliff, overlooking the Copperhouse Tidal Pool.

Formerly called Riviere Terrace, these elegant detached and semi-detached Victorian houses were begun in 1840 and the terrace was later renamed in honour of the contract awarded to the C. C. C. to forge the chains for the Clifton Suspension Bridge in Bristol.

The houses, which were occupied by senior members of the company were put up for auction in 1868. When the Copper Company disposed of their assets prior to the closure of Copperhouse Foundry, they were bought by Reverend Frederick Hockin, the Rector of Phillack, who added the final pair of houses in 1870.

